

TELL CITY, INDIANA

AL-5928 (FAA)

VOR/DME HNB
109.2
 Chan 29

APP CRS
318°

Rwy ldg **4400**
 TDZE **659**
 Apt Elev **659**

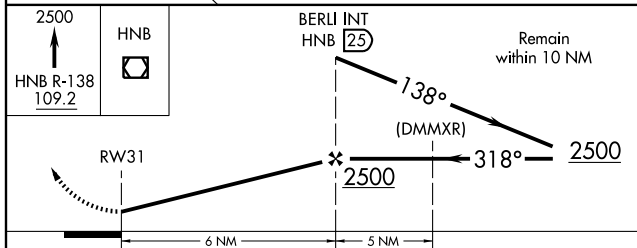
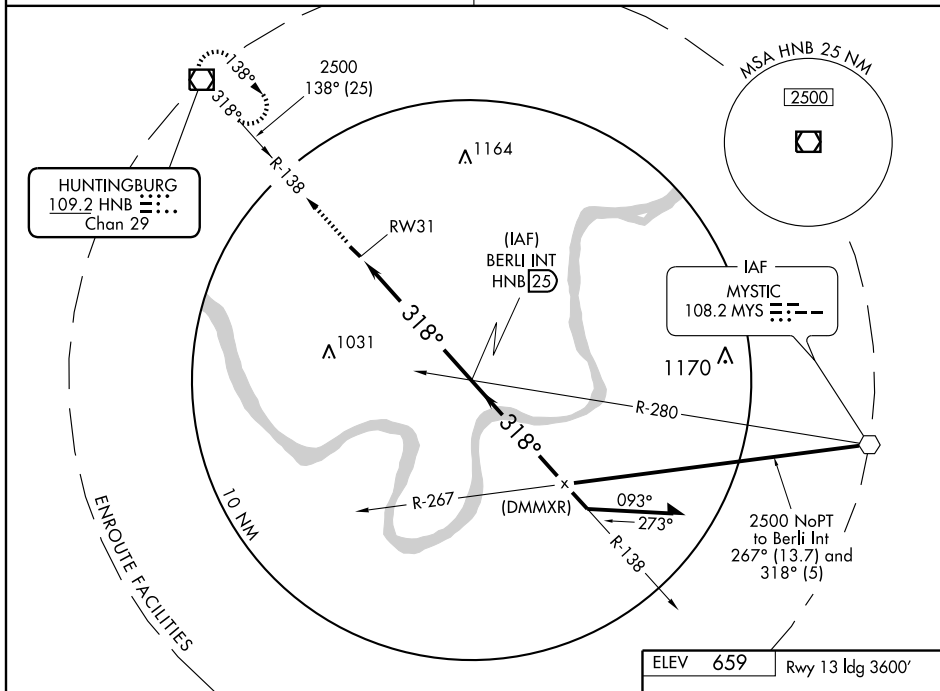
VOR or GPS RWY 31
 TELL CITY/PERRY COUNTY MUNI (TEL)

▼ Obtain local altimeter setting on CTAF;
 ▲ NA when not received, use Evansville altimeter setting.

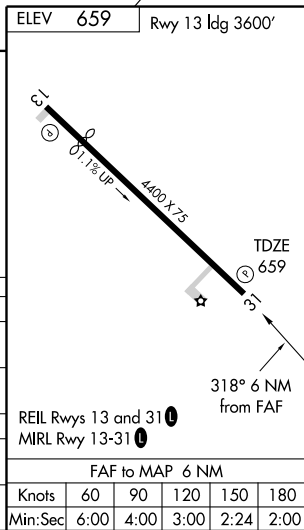
MISSED APPROACH: Climb to 2500 via HNB R-138 to HNB VOR/DME and hold.

EVANSVILLE APP CON *
126.4 226.4

UNICOM
122.7 (CTAF) **1**



| CATEGORY | A | B | C | D |
|---------------------------------------|--------|-------------|-------------------------|----|
| S-31 | 1240-1 | 581 (600-1) | 1240-1½ 581 (600-1½) | NA |
| CIRCLING | 1240-1 | 581 (600-1) | 1240-1½ 581 (600-1½) | NA |
| EVANSVILLE ALTIMETER SETTING MINIMUMS | | | | |
| S-31 | 1360-1 | 701 (800-1) | 1360-2 701 (800-2) | NA |
| CIRCLING | 1360-1 | 701 (800-1) | 1360-2 701 (800-2) | NA |



TELL CITY, INDIANA
 Amdt 5 03359

38°01'N - 86°41'W

TELL CITY/PERRY COUNTY MUNI (TEL)
VOR or GPS RWY 31